

특수용도 어퍼바디 (Upper body for special purposes)



보틀링 내장밴
(Van built bottling)



병아리 운송차
(Chick transport vehicles)



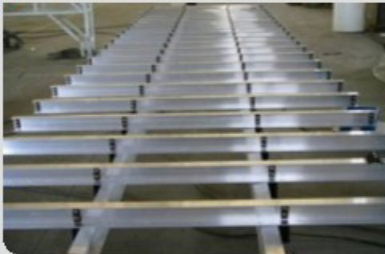
이동정육 판매차
(Mobile service selling fresh meat)



일반 적재함
(Platform upper body)

시 및 복합재 등 경량 소재를 적용 30% 무게 감소, 연비 20% 향상

20% fuel efficiency improvement, reduce weight by 30% through adopting light materials like Al and composite materials



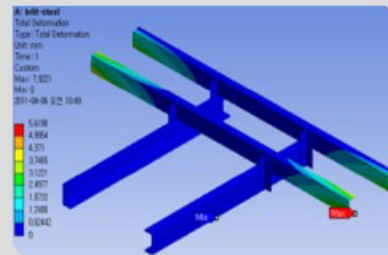
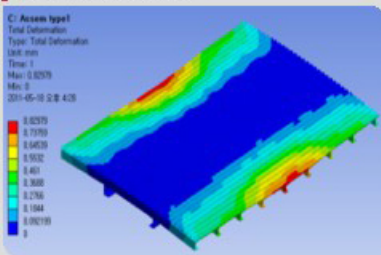
- AL



- 복합재
- Composites

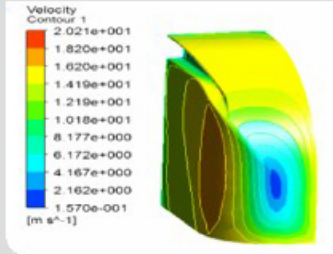
복합재 프레임 및 플로어 구조 최적 설계 및 해석 기술 보유

Possession of technique including composite frame design, floor structure optimization design and floor structure analysis



스포일러를 대체하는 냉동 VAN 디자인 및 공기저항적인 설계기술 확보

Secure refrigeration van design and air-resistant design technology substituting spoilers



샌드위치 복합소재를 적용냉효율성 20% 향상

20% cooling efficiency improvement with an application of sandwich structure composite

